

FIBARO Wall Plug

The smallest in the world



Most sophisticated device



FIBARO Wall Plug with power metering feature is an intelligent, ultimate plug & play, extremely compact, most sophisticated, remotely controlled outlet adapter. This highly functional wall plug can be applied wherever you want to control electrical devices, while monitoring power consumption in a convenient and maintenance-free way.

Extremely **Compact and Beautiful**

FIBARO Wall Plug is the smallest and most attractive device of this type available in the world.

Its modern design perfectly fits in with any interior design. Look at the surface smoothness and its beautiful crystal power ring.



Competitors solutions



Ultimate **Plug & Play**

The Wall Plug requires no installation tools or electrician. Just take it out of the box, put it into an electrical outlet, and plug in any electrical device.

The user-friendly interface ensures an easy and intuitive way of adding Wall Plugs to the FIBARO System.



on the side of the casing
to add the wall plug
to the Z-Wave network



put it into power outlet, then connect
any electrical device

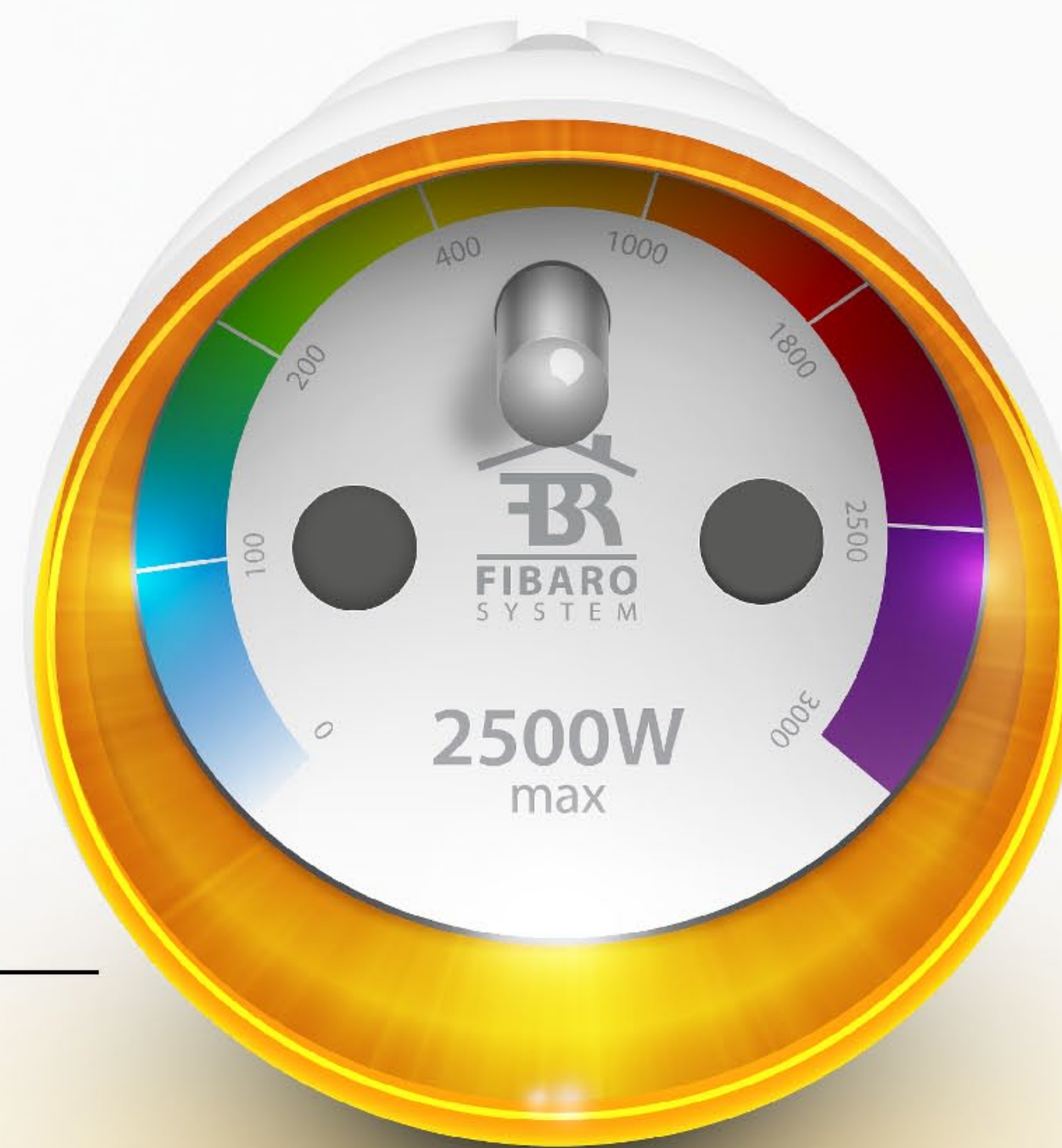


Excellence in design

Each component was created with masterful precision and tested in extreme conditions. FIBARO Wall Plug is the product designed for you. Despite hundreds of technical challenges, it was designed and created without compromise.

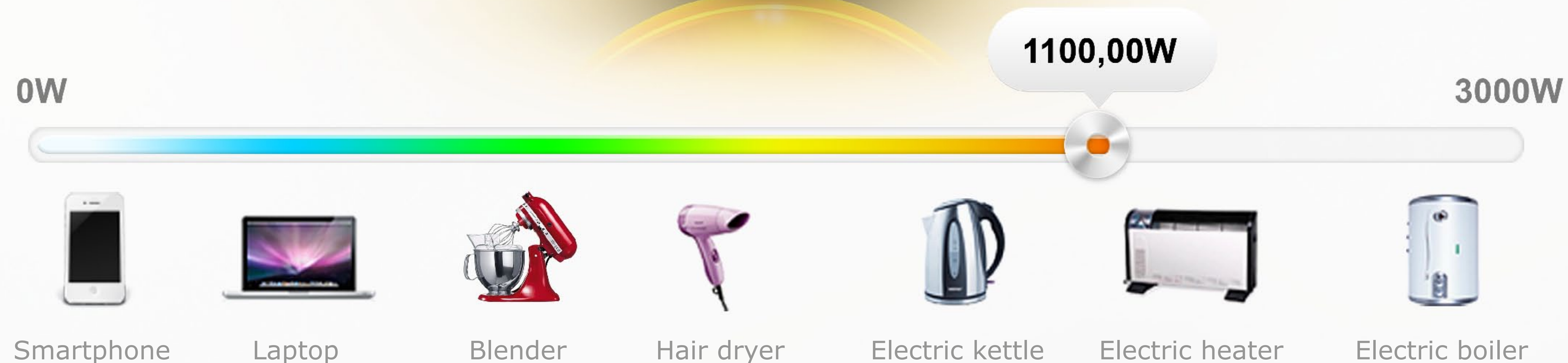
The device is not a simple remote control plug, it is a real engineering masterpiece.

Take it in your hands, and see the love our engineers gave to this device.



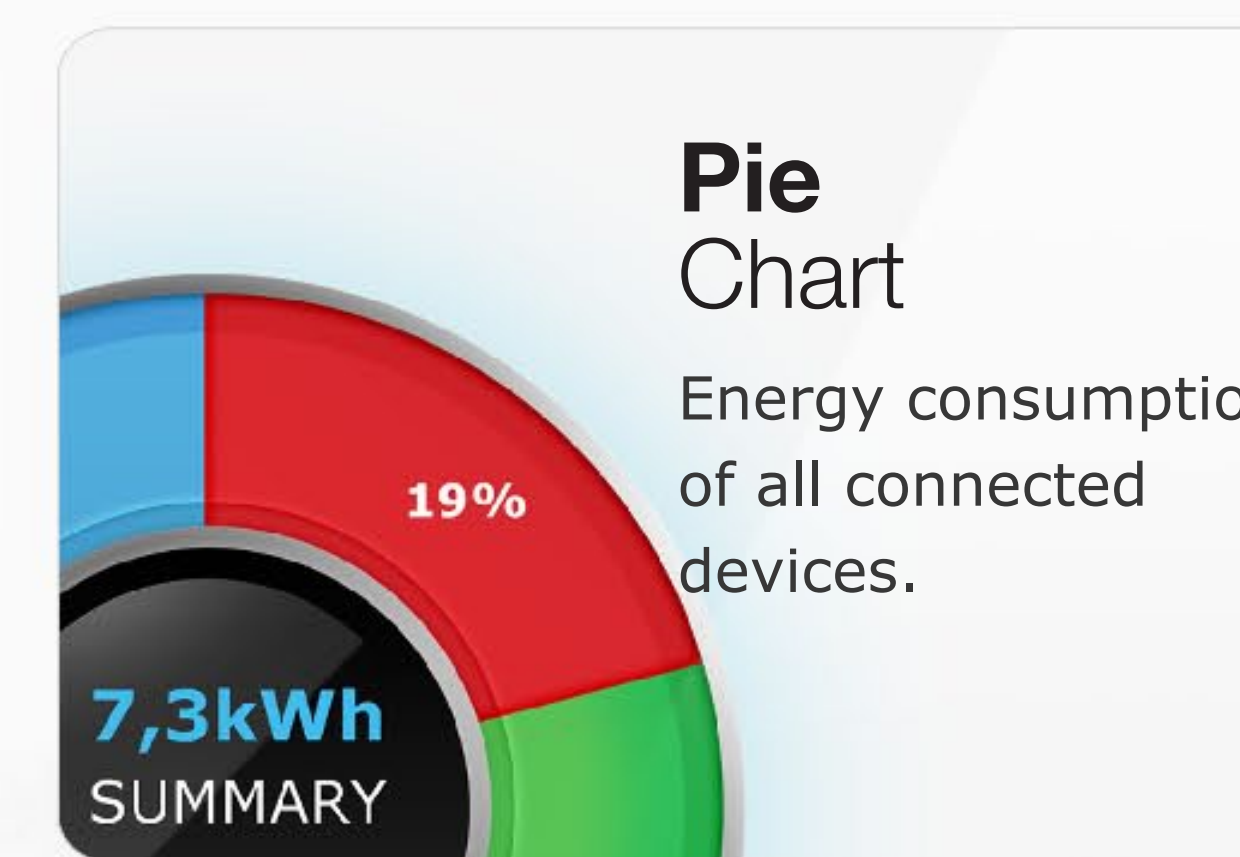
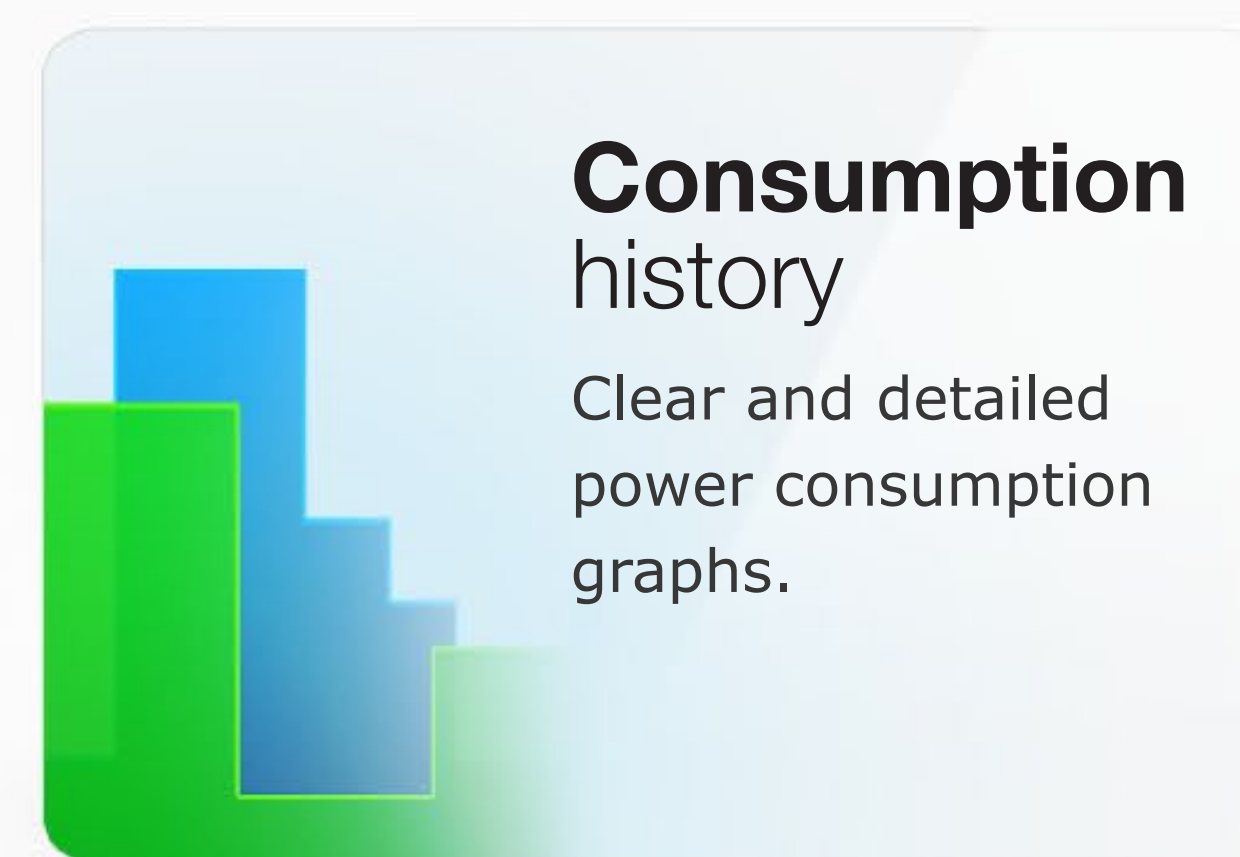
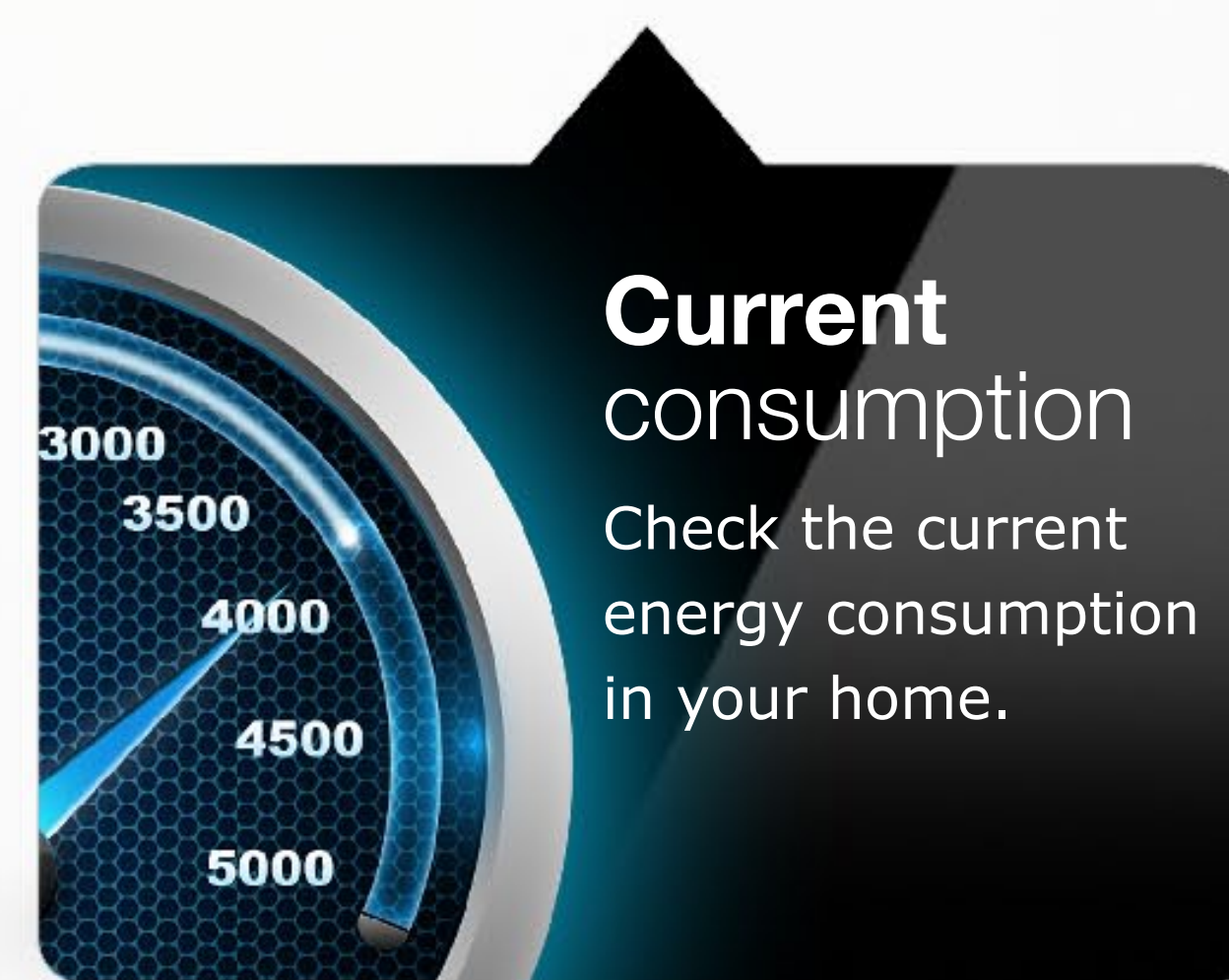
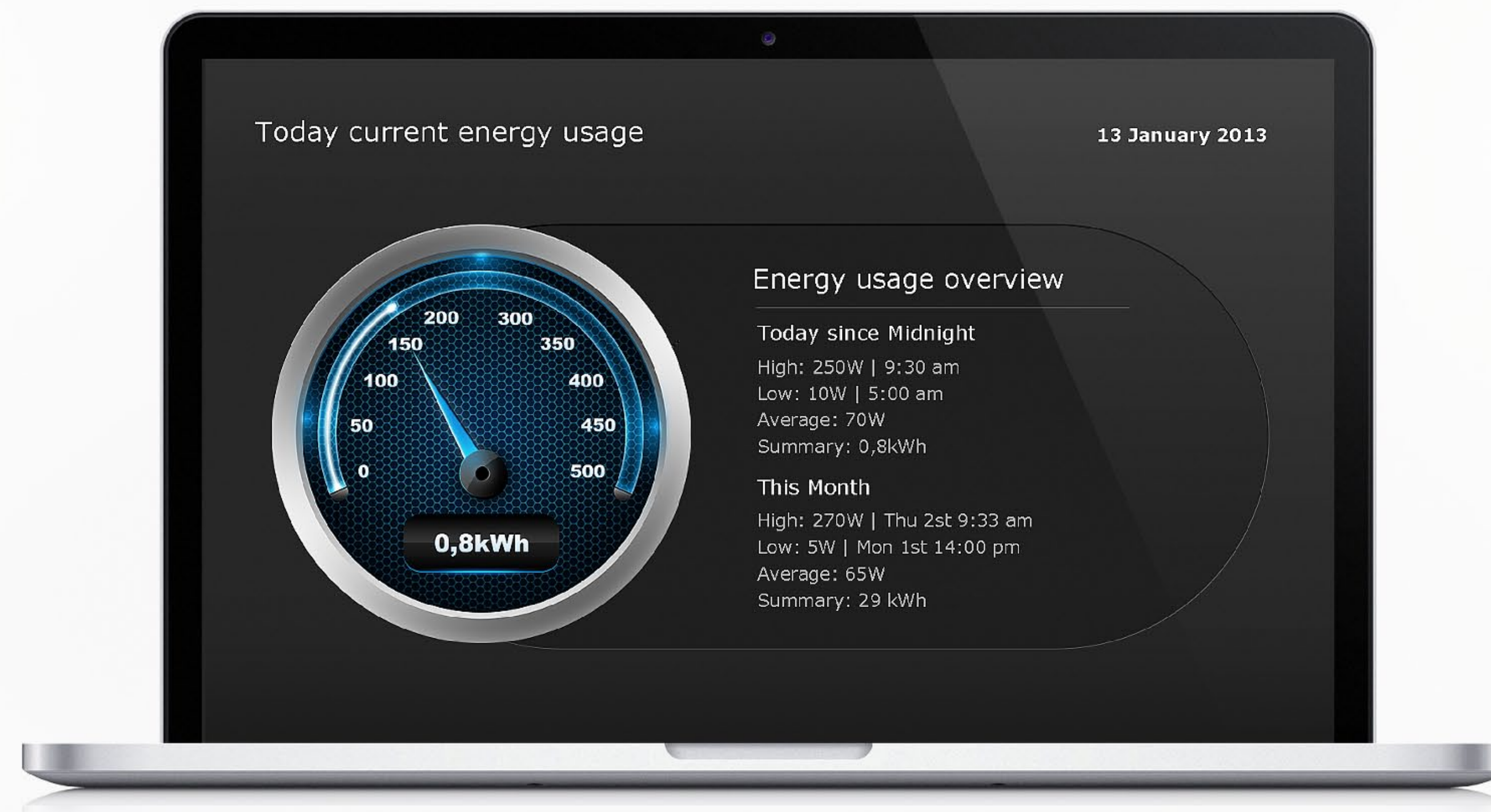
The crystal RGB LED ring informs you about the current load of the connected appliance by visually changing its color.

The casing is made of the high quality materials, with its outer shell polished to an accuracy of 3 nanometers.




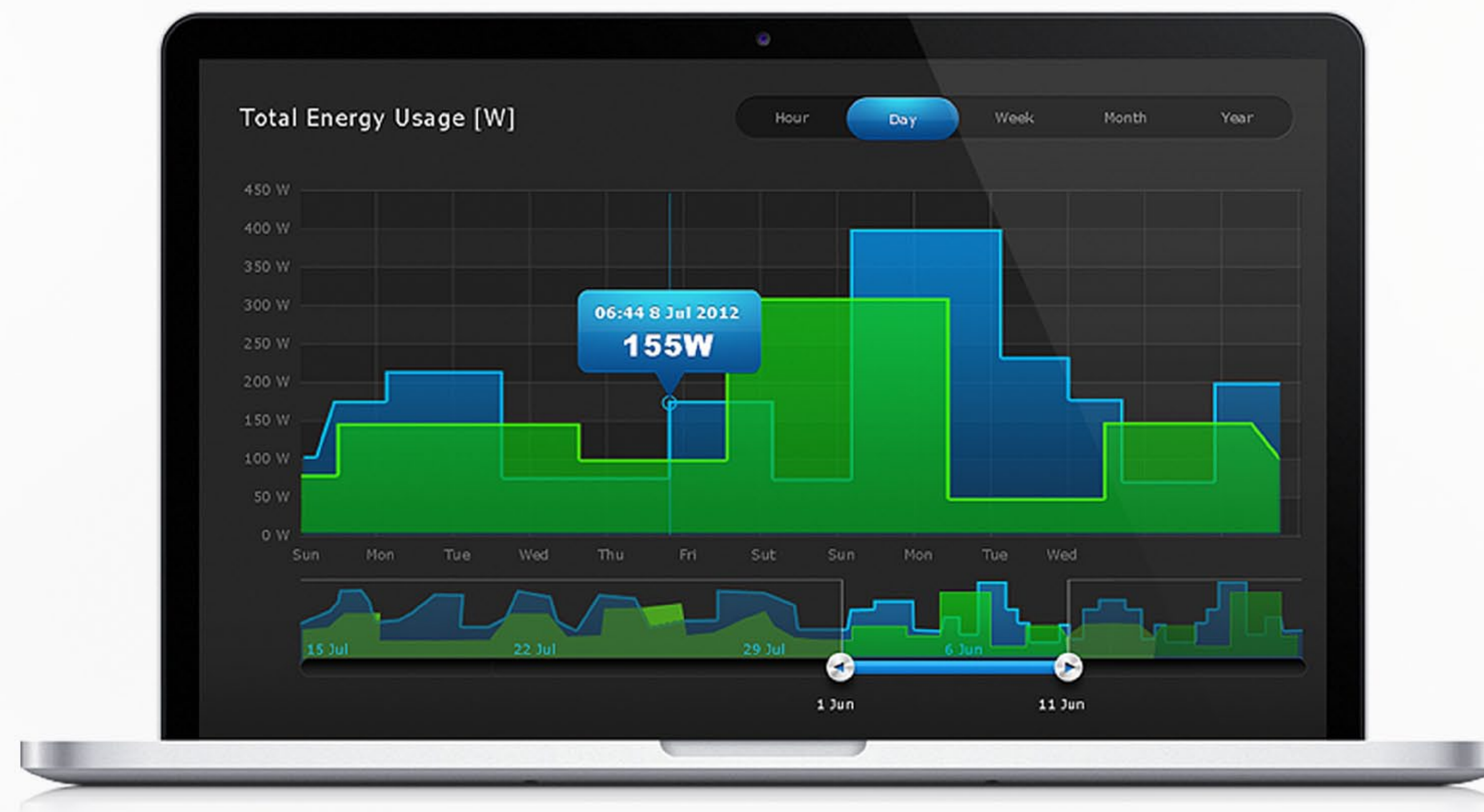
Real time **energy monitoring**

Check the current energy consumption in your home within the configuration interface of Home Center 2
Find vampire power devices and decide on their activities.

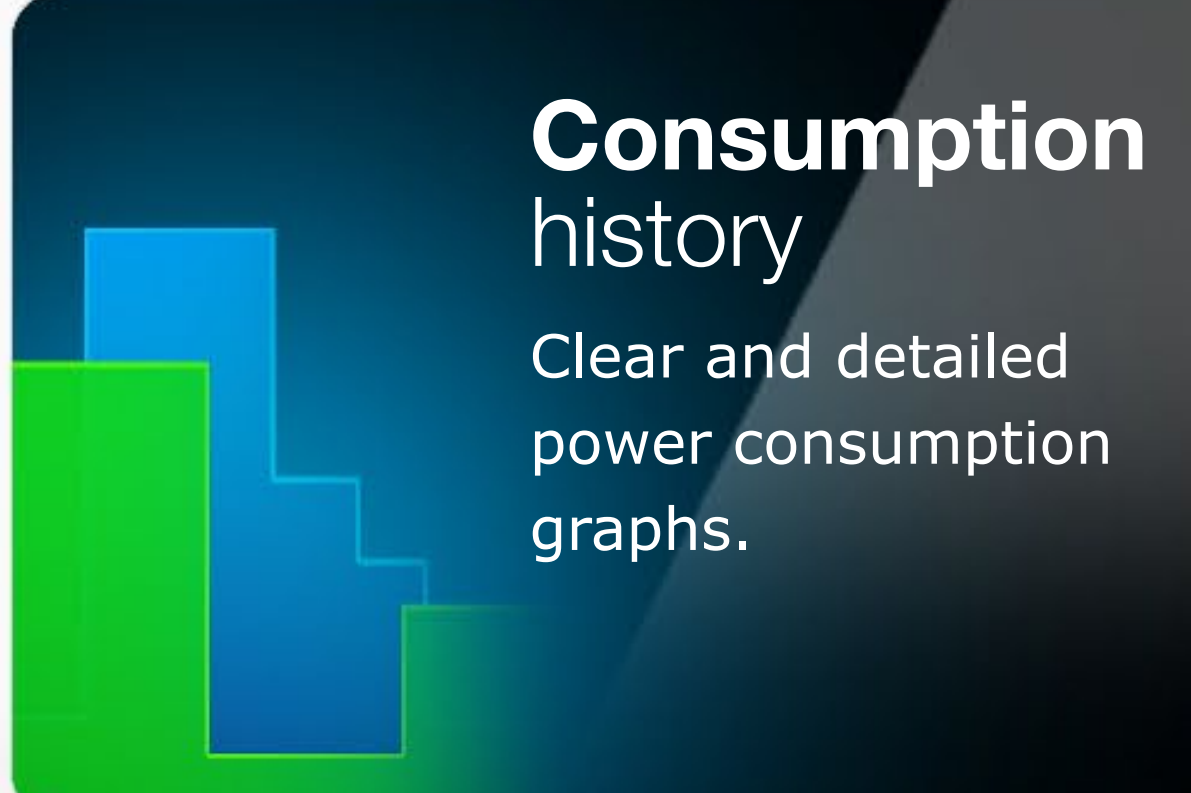


Check **historical consumption**

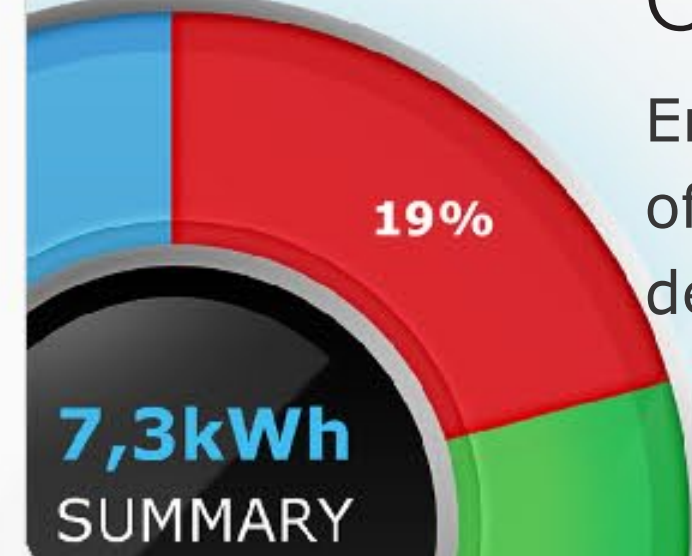
Clear and detailed power consumption graphs show the history of energy usage. It gives you the opportunity to control and effectively plan energy consumption costs.



Current consumption
Check the current energy consumption in your home.



Consumption history
Clear and detailed power consumption graphs.



Pie Chart
Energy consumption of all connected devices.

7,3kWh SUMMARY

19%

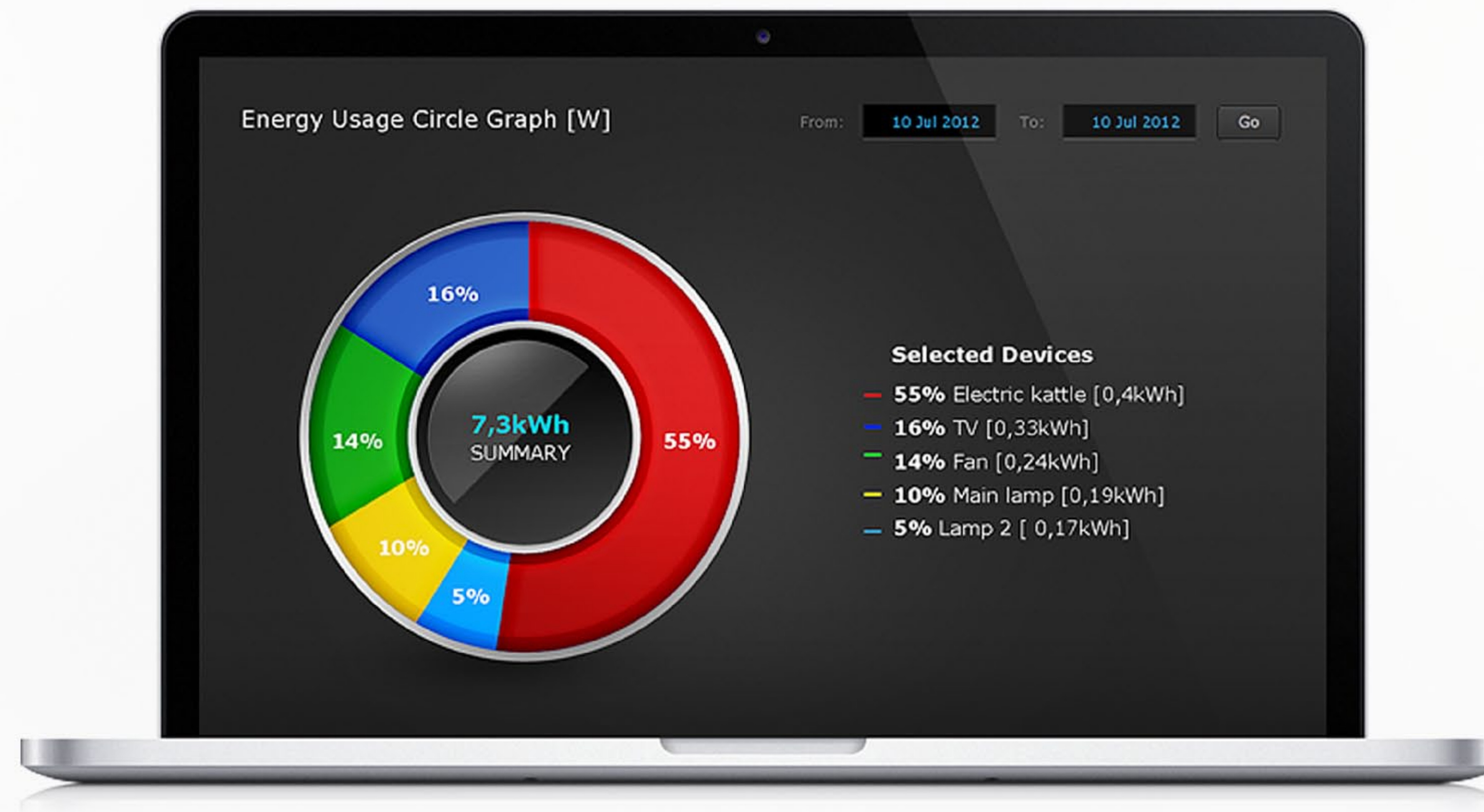


TOP5 consumption
List of the top 5 energy consumers in your home.

4,0 3,3 2,4 1,9 1,5

Easily compare **different devices**

Energy consumption of all devices connected to the System is presented in extremely intuitive pie charts, in relation, by percentage.



Current consumption
Check the current energy consumption in your home.

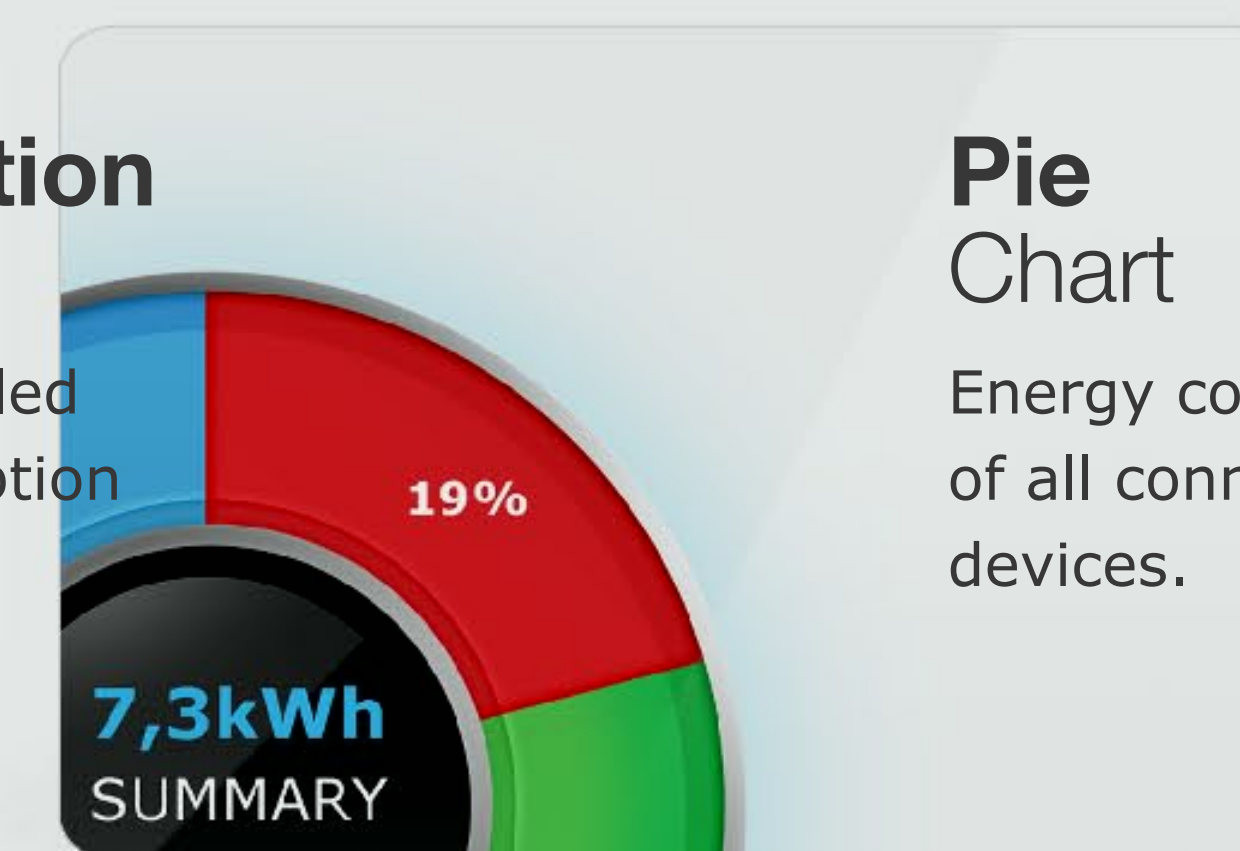
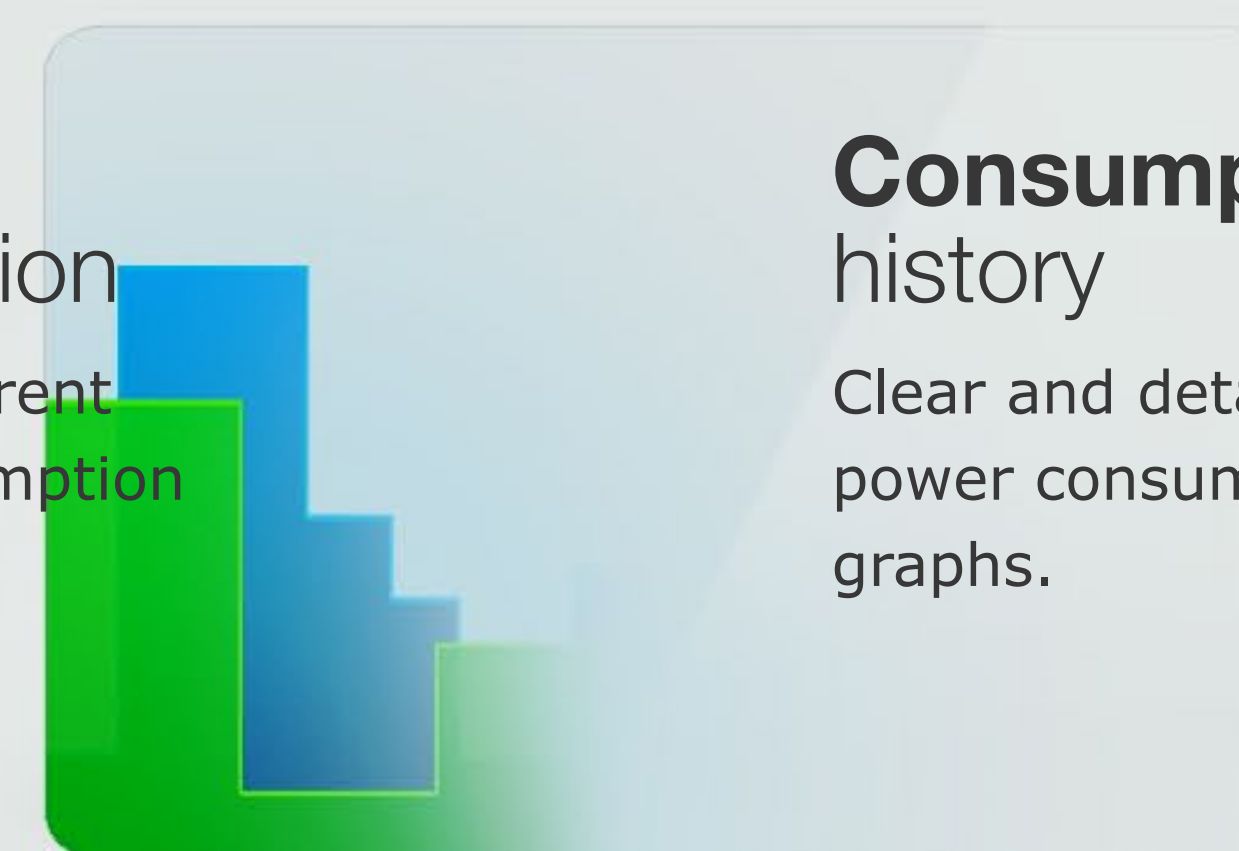
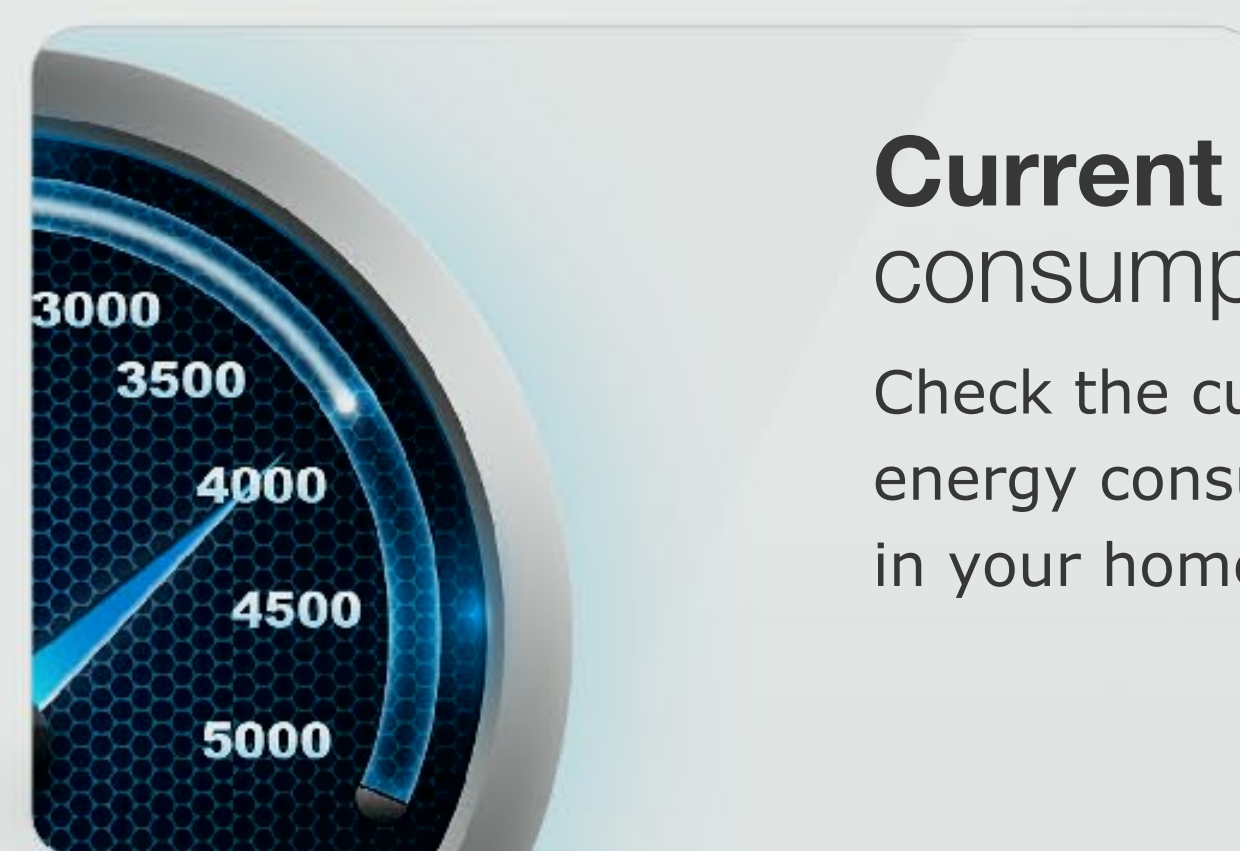
Consumption history
Clear and detailed power consumption graphs.

Pie Chart
Energy consumption of all connected devices.

TOP5 consumption
List of the top 5 energy consumers in your home.

Save money **on every room**

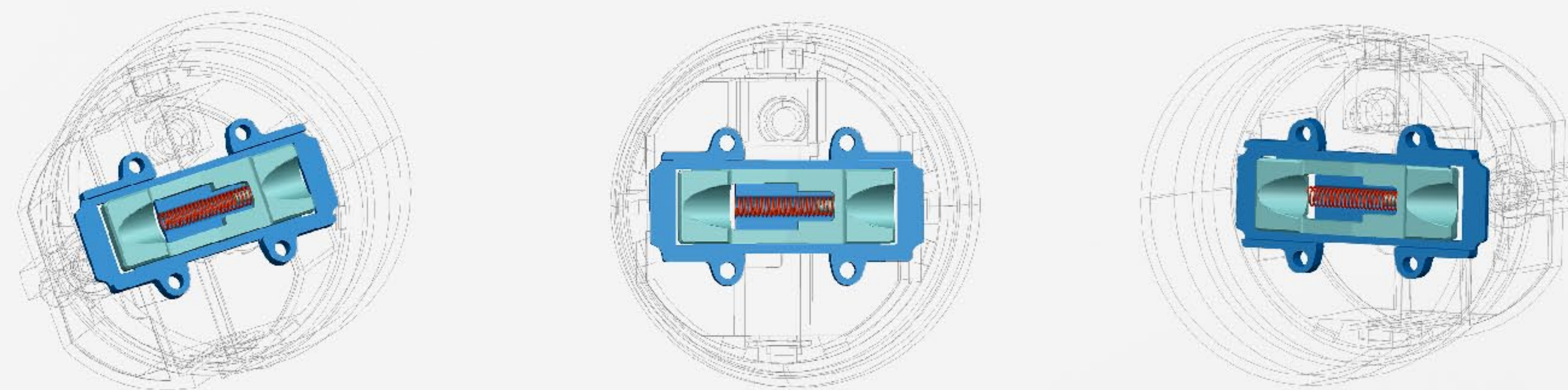
You can see a list of the top 5 energy consumers in your home.
The chart in Home Center 2 interface may either point out the devices or the rooms.
Verify energy class of your household equipment.



Child **safety**

The device is equipped with a special, built-in plug cover that provides socket safety.

This is especially useful in protecting your babies, whose curiosity and creativity in their youngest years is endless.



Faulty device report

The device is the safest wall plug in the world because it doesn't allow inclusion of a damaged device if it is short circuited, thereby protecting the entire electrical system against damage.

It can also report if the device is not working properly.



Don't worry, the Wall Plug in cooperation with Home Center 2 will automatically shut down the device and alert you about the event. This way you will not be surprised by the event when you come home.



Immediately after the plug shuts down the broken device you will receive a short report via SMS* or email. The message alert will also appear in your interface.

* SMS service is not available in all countries

Load under control

FIBARO Wall Plug is a one of a kind miniature device that allows you to control the amount of electricity consumed. Change in color of the flawless crystal LED ring informs you about the current load of the connected appliance. Besides that, built-in temperature sensor will alert you with flashing purple light if the temperature exceeds 55°C. The alarm will also run if you go beyond the maximum permissible load of 2.5 kW.

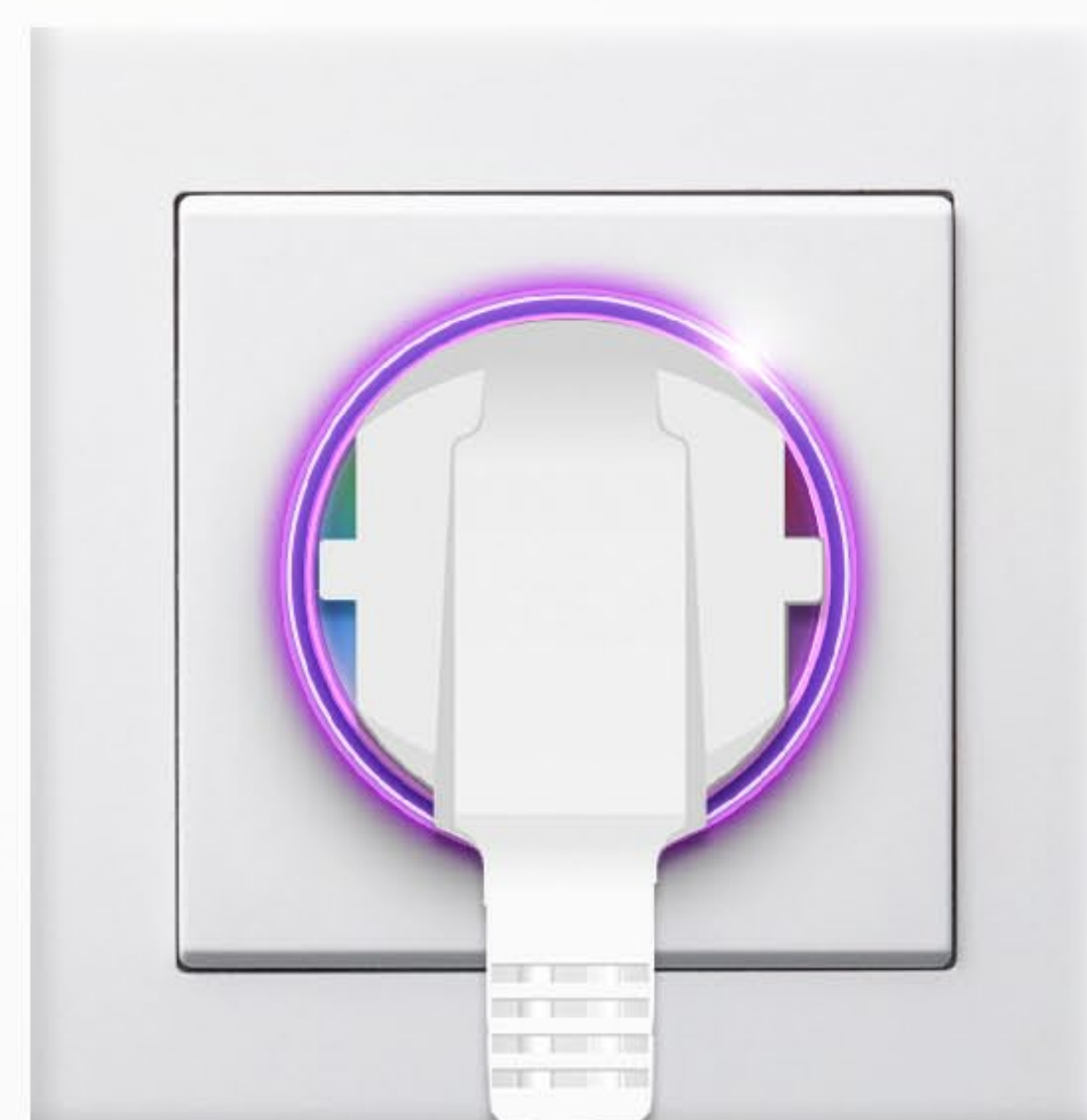
Power Consumption



Information Overload



Informs you about the overheating or overloading of the appliance.



Laptop



Mobile



Hair dryer



Electric heater

for the device

The 16 million colors scale gives you an easy to read display of actual power consumption of the connected equipment.

0W

2100W

3000W



Built-in **network range tester**

The FIBARO Wall Plug has a unique feature of testing the intelligent Z-Wave network coverage. Ultra easy, extremely fast network read time testing shows actual connectivity status.

Start the process by pressing the button on the plug's casing for a few seconds. LED's purple light will inform you that the plug is in testing mode. See the current coverage by color displayed.



Baby sitter

Clear rules and guidelines are extremely important in raising children. FIBARO can help you even in this area.

Connect the Wall Plug to a game console or TV in the children's room and remotely decide when your children can use the connected devices.



Strain Relief

How many times have you had to repair your broken outlet?

With FIBARO you can get rid of this annoying task forever.

Each Wall Plug is equipped with specially designed safety sticker that prevents strain relief.



Bedside **lamp feature**

The Wall Plug's amazing LED ring illuminates with a pale blue or white light while it's connected to the power outlet, which ideally plays a role of a bedside lamp. The ultra soft light can be set temporarily by pressing the button on the Wall Plug's casing.

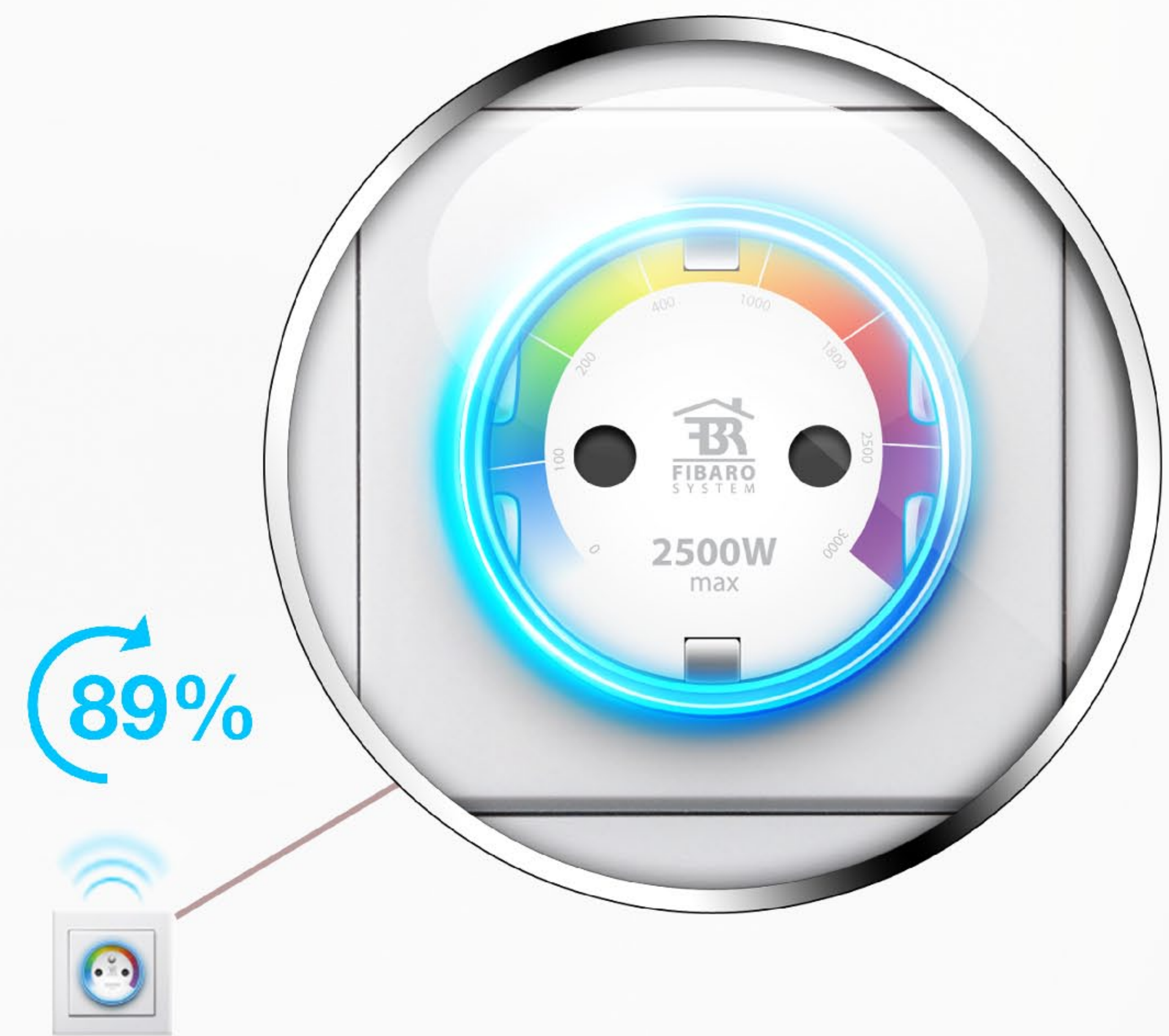


Wireless update

You can upgrade the device wirelessly, by choosing that option in Home Center 2, anytime a new firmware is available.

You don't have to disconnect it from a wall socket and waste time connecting it to computer.

Just press update button and enjoy the time with your loved one.



in progress
Downloading new software

 **FIBARO**
Home intelligence